



Haycroft Walk

Kingsthorpe, Northampton

oriordanbond
SALES & LETTINGS



Haycroft Walk

Kingsthorpe
NN2 8BH

PRICE £285,000

O'Riordan Bond is pleased to market this extended three/four bedroom semi-detached family home, situated in a quiet cul-de-sac location, in this popular area of Kingsthorpe. The property is within walking distance to Whitehills Primary School, a local bus stop and shops.

The accommodation comprises large entrance hall with downstairs bedroom/office, family bathroom, large living room leading through to an extended kitchen/breakfast room with utility room and access to the garden. From the first floor landing is a newly fitted shower room and three good size bedrooms. Outside is an enclosed rear garden. To the front of the property is a driveway providing ample off road parking leading to an integral garage with electric door. Further benefits include uPVC double glazing and gas radiator heating. (B/1028/M)

Additional information

- Council Tax Band: C
- Energy Efficiency Rating: D

Viewing

Viewing strictly by appointment – details below

Disclaimer

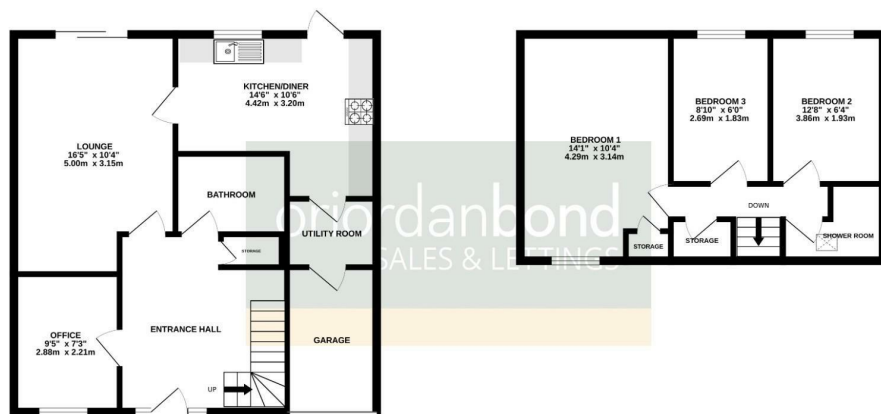
O'Riordan Bond Estate Agents Limited has not tested apparatus, equipment, fittings or services and so cannot verify they are in working order. The buyer is advised to obtain verification from their solicitor or surveyor.

O'Riordan Bond Kingsthorpe Sales
01604 722007

kingsthorpe@oriordanbond.co.uk

GROUND FLOOR
643 sq.ft. (59.7 sq.m.) approx.

1ST FLOOR
385 sq.ft. (35.8 sq.m.) approx.



TOTAL FLOOR AREA: 1028 sq.ft. (95.5 sq.m.) approx.

Whilst every attempt has been made to ensure the accuracy of the floorplan contained here, measurements of doors, windows, rooms and any other items are approximate and no responsibility is taken for any error, omission or mis-statement. This plan is for illustrative purposes only and should be used as such by any prospective purchaser. The services, systems and appliances shown have not been tested and no guarantee as to their operability or efficiency can be given.
Made with Metropix 02026

